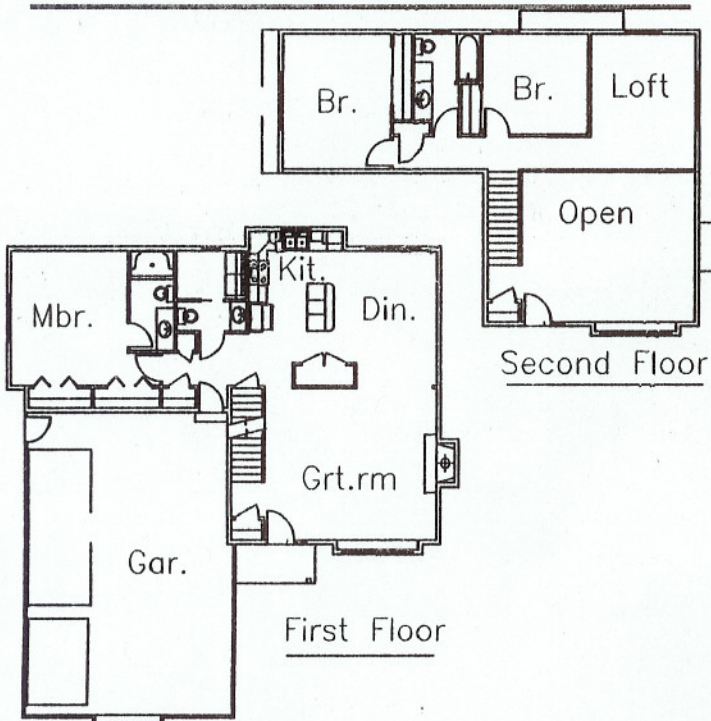


1004 Pendleton Road - Neenah

directions

From Hwy 41 in Neenah, exit west on JJ to Babcock St. Left (south) on Babcock to West Cecil. Turn right (west) on Cecil St. to Pendleton Rd. Home is located on the corner of Pendleton Rd. and Cecil St.



builder bio



Mark Fasel's commitment to making your new home dreams a reality began in 1979. Mark and his experienced associates have coordinated the building process from dream to reality throughout the Fox River Valley providing the experience necessary to create an informative and enjoyable experience.

Do you have an interesting lot to work with? Creating walk-out or lookout lower levels on challenging lake or rural settings has been our specialty for many years. Whether you are considering an entry-level home, retirement home, or somewhere in between, you will appreciate honest value provided by a knowledgeable, experienced friend.

Thank you for attending the Parade of Homes. Please visit us on the web at www.markfaselcustombuilthomes.com.

description

Welcome to our 2008 Parade Home entry. The efficiently designed one and a half story home with three car garage includes features typically reserved for large price tag models.

Entering the front door you will be greeted by the staircase of metal scroll and glass balusters. Relax in the great room with the column surrounded fireplace and tall overlooking ceiling.

The first floor master bedroom provides a private get away with its lit tray ceiling, private closets and bath areas.

Enjoy the view of the lower great room from the upper level loft/office area and private bedrooms separated by the bathroom with ample vanity counter space.

This is a WI Energy Star® constructed home with decorator nooks, solid panel doors, Aristocraft® cabinets, lower level egress window with rough-ins for future expansion. Located in the City of Neenah, close to schools, church and shopping!

Thank you to the suppliers and craftsman that ensure owners of a Mark Fasel Custom Built Home are Happy Home Owners!